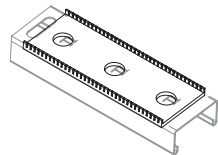


ACCESSORIES

Isolation Pad



Prevent galvanic corrosion between two dissimilar metals.

Contact CMP for more information regarding accessories.

PPE



CAUTION: We strongly recommend wearing suitable PPE including anti cut gloves.

Please refer to local PPE regulations.

www.cmp-products.com  
Tel: +44 (0) 191 265 7411  
E-mail: customerservices@cmp-products.com

Cable Cleat Specification							
Name	Type	Material	Certification	Size Range	Temp Range	Liner Type	Bolt(s)
EVEREST-S	HVSS-CC-S	Stainless Steel	IEC 61914	52-100mm in 8 sizes Trefoil Formation	-60°C to +90°C	Low Smoke & Fume (LSF) Zero Halogen (LSOH)	2 x M12 Base Fixings & 2 x M12 Top Fixings

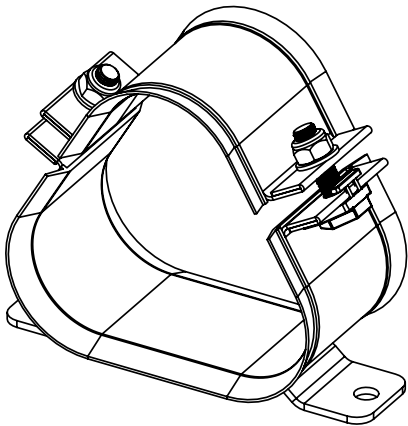
All products are short-circuit tested. Please visit [www.cmp-products.com](http://www.cmp-products.com) for further details.

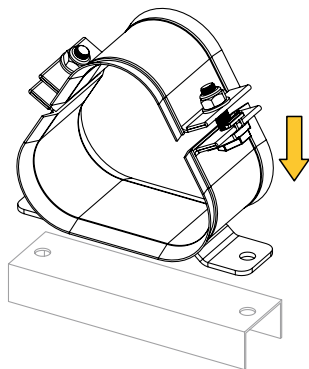
**Note:** Fixings not included. For more information on fixings please visit [www.cmp-products.com](http://www.cmp-products.com) and download the Cleat Fixing Pack data sheet. Any other queries please contact CMP via email [customerservices@cmp-products.com](mailto:customerservices@cmp-products.com).

There are no restrictions on the mounting orientation of the cleats.

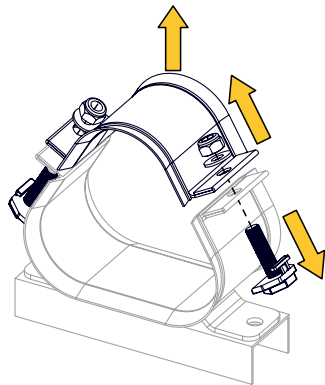
EVEREST-S CABLE CLEAT  
HVSS-CC-S

High Voltage, Stainless Steel,  
Top Opening, Closed Centres,  
Trefoil Formation Cable Cleat

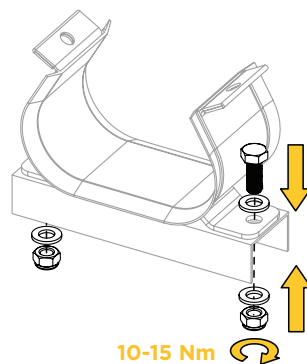




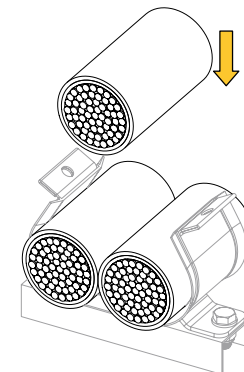
1. PLACE CLEAT ON MOUNTING SURFACE



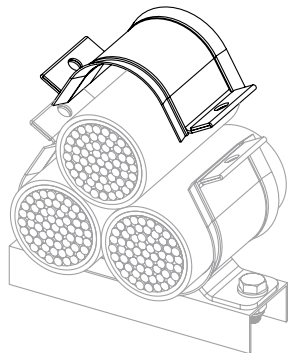
2. REMOVE THE NUT AND WASHER



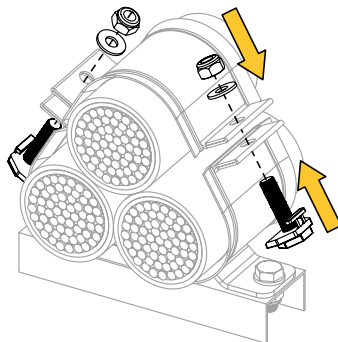
3. SECURE CLEAT TO MOUNTING SURFACE



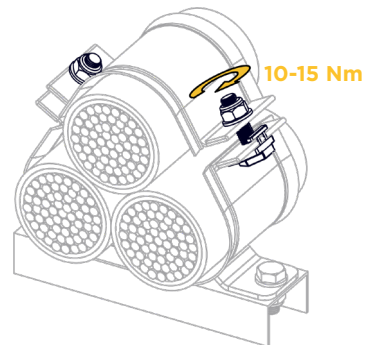
4. LAY CABLES IN CLEAT



5. ATTACH TOP



6. FINGER TIGHTEN BOLTS



7. TIGHTEN MOUTH BOLT NUTS EVENLY



SECURING CABLES WORLDWIDE